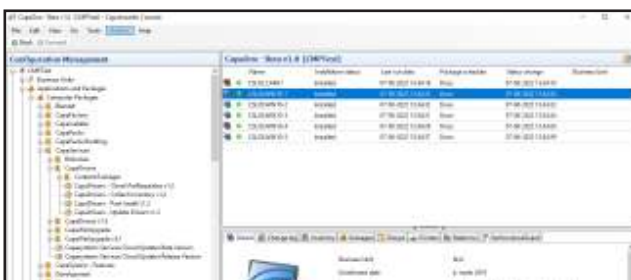


SOLUTION BRIEF

CONFIGURATION MANAGEMENT



Use CapaInstaller Configuration Management for centralized packaging, deploying, monitoring and maintaining software installations for all Microsoft Windows based clients, Apple macOS and servers. The solution can perform advanced software deployment with or without end-user intervention and without requiring IT staff to visit the target clients.



Improved daily operation

CapaInstaller Configuration Management makes it possible to create and maintain secure and stable environments for all users with optimal performance on all computers while reducing the cost and effort required for administration, installation, maintenance and support. Features like printer management, remote reinstallation and the common console will make it easier to manage the daily operations.

Using the power scheme feature you can even minimize the use of power.

How It Works

CapaInstaller Configuration Management is part of CapaInstaller Unified Endpoint Management (UEM). An agent application is running silently and reliably on each computer and device, placing very little load on these unities. Distributed network infrastructure is supported by remote management servers, package synchronization, download and managed bandwidth. From the CapaInstaller Management Console, all configuration management operations are controlled by operators and distributed to the agents through the infrastructure for execution.

Reflect Your Infrastructure

By using links or groups you can create the relation-needed between your configuration items to reflect your infrastructure and thereby improve deployment. Furthermore every action is automatically recorded in a change log ensuring history is available for troubleshooting or reports later on.

Change Management

Use the staged deployment feature to create changes in a controlled and secure environment. You can create stages like development, test and production and approve your packages according to the level of requirements before you move them to the next stage. Thereby you minimize the impact on the business and raise the level of service delivery at the same time.

Release Management

You can distribute and track installations as they are deployed to clients across the network. All jobs are monitored by the system, with detailed status information displayed in the central console and/or sent to a system administrator by e-mail. The possibility of package schedule with expiration date, package release and execution date makes it possible for you to manage the release of packages according to best practice.

Interactivity with end-users and multi language messaging help provide flexibility and ensure high success rates. Deployment can run in silent, attended (with end-user messaging) or requestlogoff mode.

Deployment Optimization

Features like Wake-on-LAN, http(s) support, bandwidth regulation and restart able download makes deployment easy and flexible.

Centralized Software Distribution

CapalInstaller is designed to fit into any organization's network structure. Any number of management servers can be established, on almost any Microsoft operating systems, and on almost all hardware. This enables deployment in large, multi-site environments without overloading the network, interrupting high priority traffic or inconveniencing users.

rating systems, and on almost all hardware. This enables deployment in large, multi-site environments without overloading the network, interrupting high priority traffic or inconveniencing users.

Package Management

CapalInstaller Configuration Management includes all of the tools you need to create software installation packages that will install correctly, even when distributed to computers with widely varying hardware and software configurations. Streamline your package creation process by using CapalInstaller Package Creator, which generates scripted installation packages that deliver success rates as high as 99-100%, even in complex, heterogeneous environments.

CapalInstaller Package Creator

Using the CapalInstaller Package Creator will bring a shorter and more structured development cycle of software packages. The Package Creator has been integrated with various setup formats making it a very versatile tool for packaging. Packages are based on the media (software), an installation procedure and a un-installation procedure. The (un)installation procedures are based on the CapalInstaller Scripting Language which is a VBScript extension.

Software Catalog

Not all software installations are mandatory. You can therefore mark optional packages to be listed in a catalog rather than installed automatically. Users can review the catalog at any time and use it to select and install whatever software they need. Each catalog item can be made available to all users or restricted to specific groups

Real-time reports

Query & Reporting makes it possible to create new reports based on any type of data, or to use some of the predefined reports. By choosing precisely which data to include, using both static and/or dynamic criteria, each report can be extremely concise and focused. CapaInstaller integrates with Microsoft SQL Server Reporting Services, which makes it possible to view the reports in a browser without even having CapaInstaller installed.

Mobile Device Management

Management of mobile devices is seamlessly integrated in CapaInstaller and offers centralized management of policies that controls configuration and restrictions of Apple iOS, Apple macOS and Android based devices. The solution enables the IT Department to take control of users' mobile devices using the same management console as used for Windows computers.

Power Management

With the Power Management feature you can minimize the client's power consumption, by setting up specific rules that determine when the client's in your organization should turn off, go to sleep or the like. It is possible to manage the clients in different groups with different work habits, so that the Power Management does not interfere with the work of the end-user.

Software Updates

Integrate to the CapaSystems Service - CapaPacks - to get easy access to software packages and updates. CapaInstaller monitors for software updates and notifies when new updates are ready for deployment, so you can keep your environment up-to-date and secure.