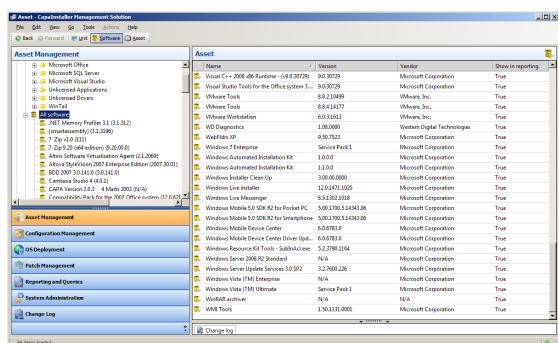


Capalnstaller

Asset Management

Version 5.6

Having a centralized management console and one common configuration management database, you can work safely and structured with the Capalnstaller Asset Management solution providing you with a complete overview of all software, hardware and other elements in use throughout your network.



Complete Asset and Inventory Overview

With this solution it is possible to manage the company's assets including software, hardware, printers and scanners. It is also possible to create custom device types, e.g. GPS, for maximum flexibility.

Software Management

Software inventory details include a full list of all versions of software installed on supported Microsoft Windows and Apple OS X computers, Apple iOS and Android devices as well as Citrix Terminal servers. File based inventory, will combined with standard inventory give a more complete picture of installed software on the computers.

How It Works

Capalnstaller Asset Management is part of Capalnstaller Computer & Device Management. An agent application running on each computer and device regularly submits updated inventory details to a service which collects, organizes and processes the data to the SQL Server database. The database makes it available for use in Asset Management and Query & Reporting.

Application Groups for License Management

An application group is a logical collection of all software versions that is related to the same software license contract. It is possible to define the number of licenses for a group of applications, or a single application. Licenses are defined for departments or enterprises. The system keeps a running total of the number of licenses that are installed and compares this to the number of licenses purchased. A compliancy reporting can show which licenses are breached.

Software Metering

By use of metering you can keep track of when, by whom and for how long each application was used on individual clients. Software suite components such as Microsoft Word, Excel and Outlook can even be metered separately to determine if the correct suite is installed for each user or if a smaller suite or single application would do. Metering enables you to see when licenses should be removed from clients, if unused, and to transfer them to where they are needed rather than spending money on new ones.

Query Based Groups

With query based application and metering groups, it is possible to make dynamic self updating groups. Licenses can be defined for a specific version, or from that version and up. The license information will be collected, even if an already installed version of a product is being updated.

License Harvesting

License harvesting is a built-in option which is available in combination with Configuration Management. Leveraging this option will optimize license usage and reduce cost.

Disallowed Applications

To enhance security and maintain productivity, administrators can forbid specific applications from running on client computers. If a user tries to

CapaInstaller

Asset Management

Version 5.6

execute a forbidden application, the CapaInstaller Agent will terminate the application.

User Inventory and Logon History

User Inventory and Logon History keep track of each individual network user. Details such as user name, domain, primary workstation, login times, etc. can be collected for all users.

Support for Citrix Terminal Server

For organizations using Citrix Terminal Server, CapaInstaller Asset Management is able to collect inventory of published applications and monitor these. Start, stop and user credentials are logged for each of the applications.

Support for Apple iOS and Android Devices

The iPhone and iPads from Apple delivers hardware and software inventory information using Apple's Push Notifications (APN). On Android devices, an App from Google Play Store collects the asset information. In addition to the standard asset information, the devices also returns IMEI, descriptive name e.g. "iPhone 4S 32GB Black", subscriber carrier, current carrier, roaming status, SIM serial number and phone number.

Hardware Inventory

Hardware inventory enables administrators to check the components of any computer or server without being next to the physical machine or open its enclosure. Hardware inventory includes extensive details about each computer, including: System BIOS, serial number, System type, RAM size, OS details, network MAC address, hard-disk size and free space, graphic card details, port selections, peripherals and more.

Expanded Asset Management

You can define, view and enter customized details on any asset. Use this feature to store information such as supplier, warranty dates, location, prices, etc. for all of your network assets. In addition, any

type of file can be attached to any item, thereby making it easy to find service agreements, PDF manuals, license agreements and support details.

Create Custom Inventories

In addition to the standard modules, Asset Management includes customizable inventory modules that you can modify with your own script commands in order to collect any type of information about each client. For example, custom scripts can be developed to report specific registry values or to deduce the department a machine belongs to based on 3rd party information (AD, HR).

Real-time Reports

The Reporting and Queries plug-in, makes it possible to create new reports based on any type of inventory data, or to use some of the predefined reports. By choosing precisely which data to include, using both static and/or dynamic criteria, each report can be extremely concise and focused. CapaInstaller integrates with Reporting Services, which makes it possible to view the reports in a browser without even having CapaInstaller installed.

Microsoft Gold Certified Partner

CapaSystems has been globally accredited as a Microsoft Gold Certified Partner.

For more information please view our web site www.capainstaller.com

Microsoft Partner
Gold Application Development

