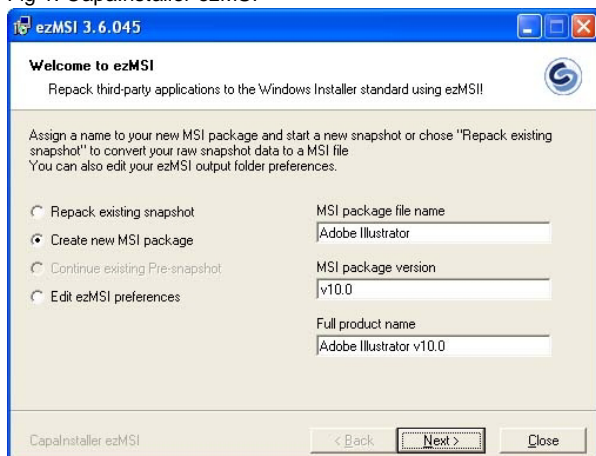


One of the most effective ways of lowering the total cost of ownership (TCO) of your information technology infrastructure is to use managed software distribution. An easy and efficiently packaging is the first crucial step to ensure successful software distribution.

ezMSI from CapaSystems enables you to generate Windows Installer (MSI) packages for any application, regardless of the installer technology used by the original manufacturer. A wizard guides you “step by step” through the entire packaging process without any use of scripting.

Fig 1: CapaInstaller ezMSI



The ezMSI Advantage

MSI is the preferred Microsoft standard for creating software installers that can function either locally or over a network and managed centrally.

ezMSI Features

- Repackages any application to the Windows Installer (MSI) standard
- Creates MSI packages without scripting
- Built-in package customization tools
- Supports advanced MSI features
- Creates advertisement shortcuts for user “on-demand installation”
- Install on Demand
- Uninstall and Repair.

MSI technology is extra powerful because it is built into the operating system. This enables the system to monitor the installation and removal of all MSI software resources (including shared resources) and to ensure that all of the resources required by installed applications will be present when needed.

Easy and efficiently Packaging

With the ezMSI you achieve a low cost in packaging tasks and a low cost keeping the software on every workstation completely up to date. EzMSI has all the timesaving functionality you need to package your software easily, with high speed and accuracy – Resulting in high quality MSI packages ready for deployment.

ezMSI Benefits

- Ensure a standard set of install options for all workstations
- Make your managed software-distribution platform even more effective
- Simple and silent installs eliminate user confusion and errors during installation
- Safe and thorough uninstalls
- Take advantage of advanced MSI features with non-MSI applications
- Package-customization tools can give better control than the original installer.

Customize Your MSI Packages

If you want to inspect and/or fine-tune your packages, the ezMSI provides comprehensive tools for doing so. You are able to view the complete contents of the proposed MSI package, including all files, file locations, registry updates and INI-file updates. Graphical tools are provided that enable you to add, remove or modify any of these to help ensure a perfect installation every time.

Installation packages created by ezMSI contain all of the settings and options established by the IT manager, so nothing is left to chance when running the installation on a client.

Deployment of ezMSI Packages

- Install from Software distribution platform
- Install from Active Directory
- Install from Network
- Install from CD-Rom.

For Even More Control

CapaInstaller Package Creator: Advanced scripting and automated installation packages.

The Package Creator is a rapid development tool for generating software installation packages. The resulting packages are optimized to ensure the highest possible success rate with little or no end-user interaction, thereby maximizing the benefits of using a centralized software distribution platform.

CapaInstaller Management Solution: Optimize and simplify Your IT Operations with CapaInstaller Management Solution

By using CapaInstaller Management Solution you will lower the total cost of ownership by managing, deploying and maintaining Windows-based clients & servers more efficient. CapaInstaller offers an easy-to-use solution that provides Operating System Deployment, Software Distribution, Patch Management, Asset Management and license metering.

About CapaSystems

CapaSystems develops and delivers innovative system management and deployment solutions. We also offer unique consultancy services.

Microsoft Gold Certified Partner

CapaSystems has been globally accredited as a Microsoft Gold Certified Partner.



Information Worker Solutions
ISV/Software Solutions